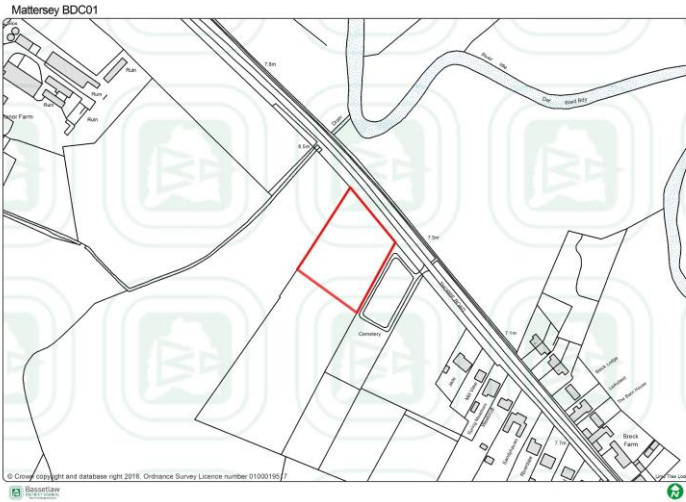


Assessed sites **not proposed** for allocation

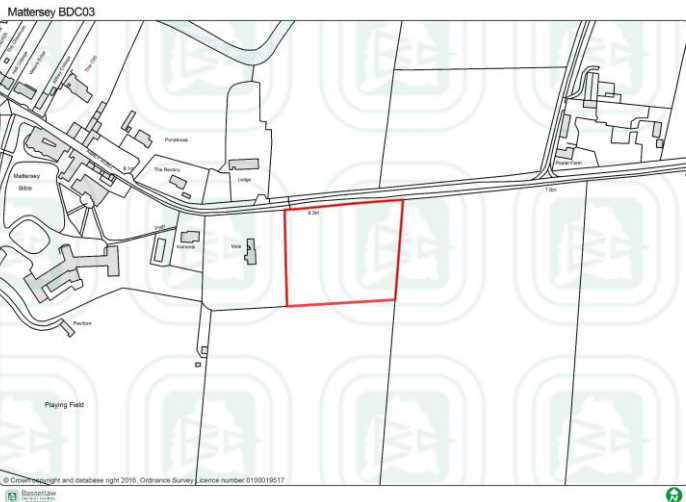
BDC01: Land south of Thorpe Road, Mattersey



Factors:

- Within the Environment Agency's identified Flood Zone
- Has not received community support
- Potential impact on landscape character
- Potential impact on built character

BDC03: Land south of Abbey Road, Mattersey

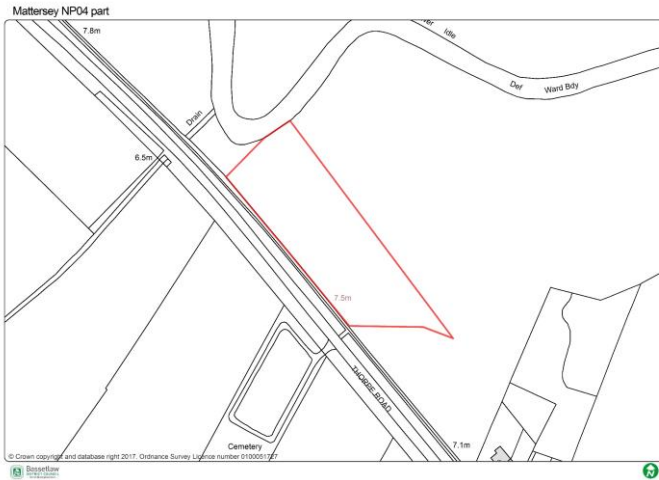


Factors:

- Highways objections based on road access
- Has not received community support
- Potential impact on landscape character
- Potential impact on built character

Assessed sites **not proposed** for allocation

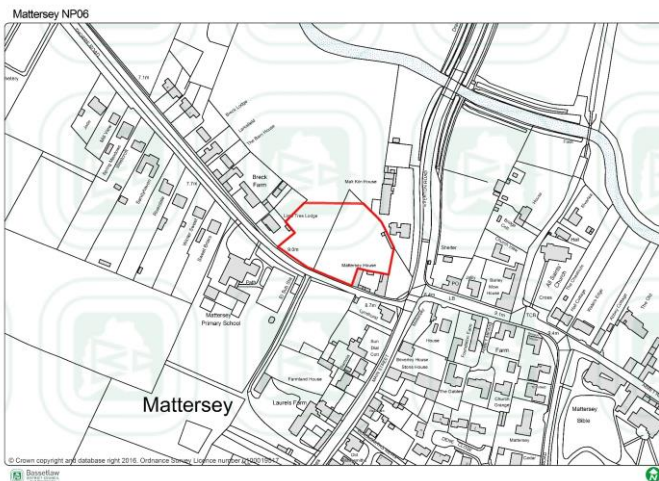
NP04 (PART): Land north of Thorpe Road, Mattersey



Factors:

- Within the Environment Agency's identified Flood Zone

NP06: Land north of Thorpe Road, Mattersey

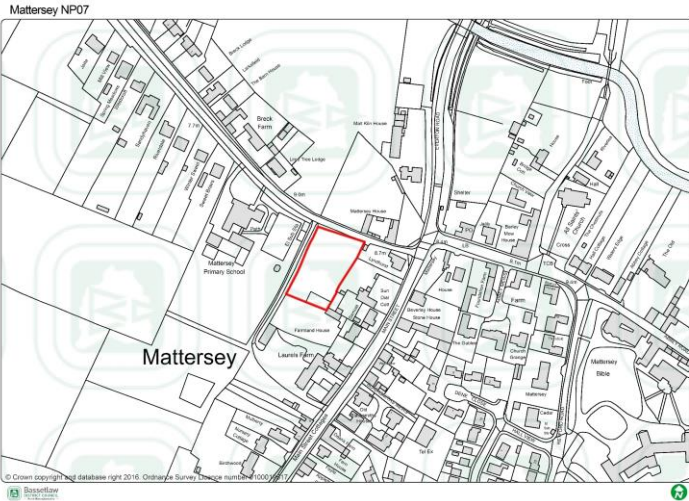


Factors:

- Objections from the Conservation Officer due to the impact on the setting of Listed Buildings and the Conservation Area
- Potential impact on landscape character
- Mixed community support

Assessed sites **not proposed** for allocation

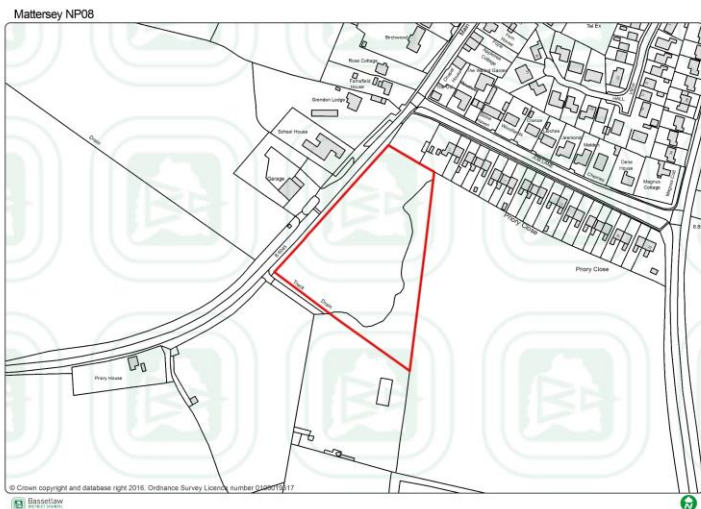
NP07: Land south of Thorpe Road, Mattersey



Factors:

- Objections from the Conservation Officer due to the impact on the setting of the Listed Buildings and the Conservation Area
- Potential impact on landscape character

NP08: Land east of Main Street, Mattersey (Millennium Gardens)

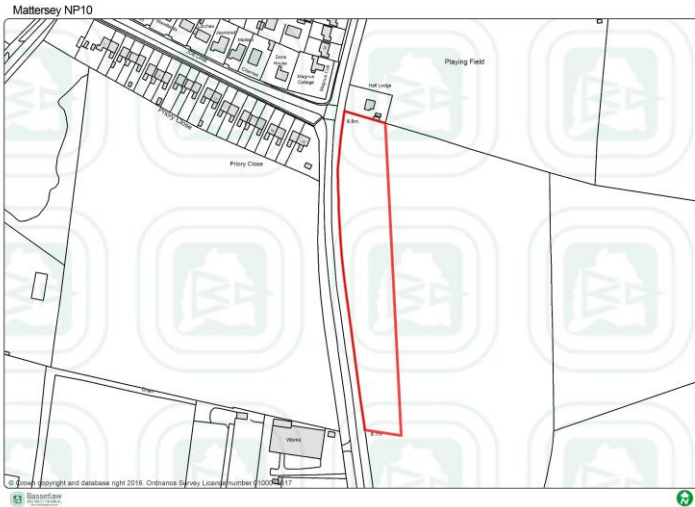


Factors:

- Within the Environment Agency's identified Flood Zone
- Lack of community support
- Potential impact on landscape character

Assessed sites **not proposed** for allocation

NP10: Land east of Retford Road, Mattersey



Factors:

- Lack of community support
- Potential impact on built character
- Potential impact on landscape character

NP11: Land west of Retford Road, Mattersey

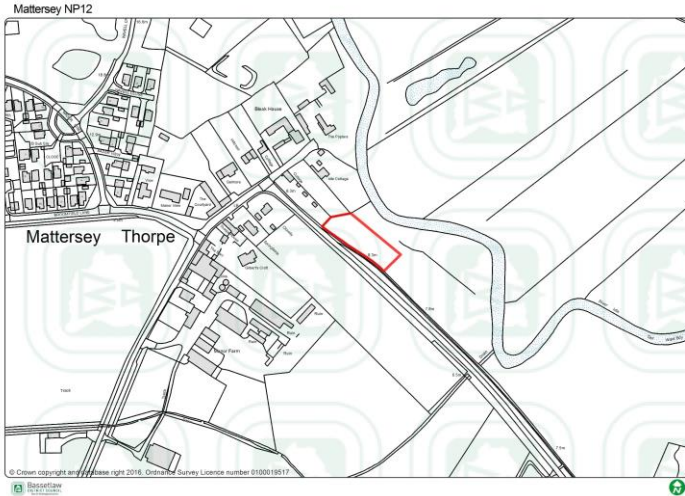


Factors:

- Mixed community support
- Potential impact on built character
- Potential impact on landscape character

Assessed sites **not proposed** for allocation

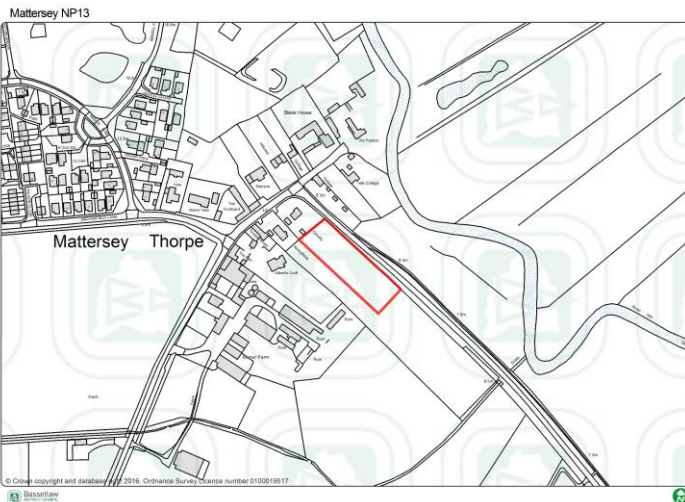
NP12: Land north of Thorpe Road, Mattersey



Factors:

- Within the Environment Agency's identified Flood Zone
- Potential impact on built character
- Potential impact on landscape character

NP13: Land south of Thorpe Road, Mattersey Thorpe

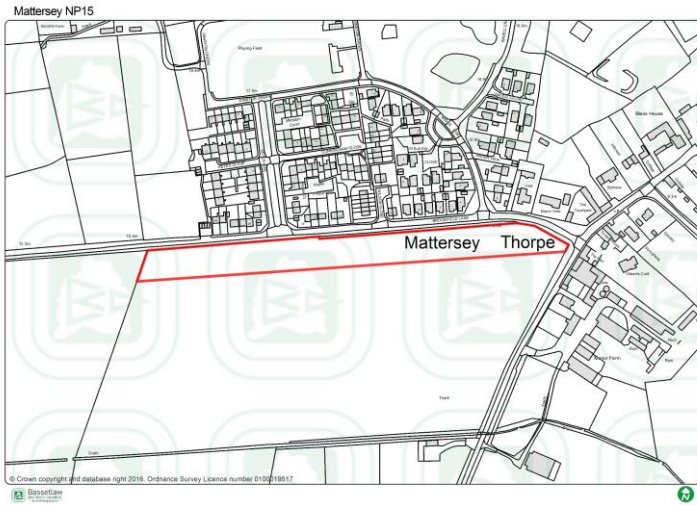


Factors:

- Part of the site is within the Environment Agency's identified Flood Zone
- Mixed community support

Assessed sites **not proposed** for allocation

NP15: Land south of Broomfield Lane, Mattersey Thorpe



Factors:

- Potential impact on built character
- Potential impact on landscape character
- Lack of community support

NP16: Land west of Keyes Close, Mattersey Thorpe



Factors:

- Potential impact on landscape character
- Lack of community support

Assessed sites **not proposed** for allocation

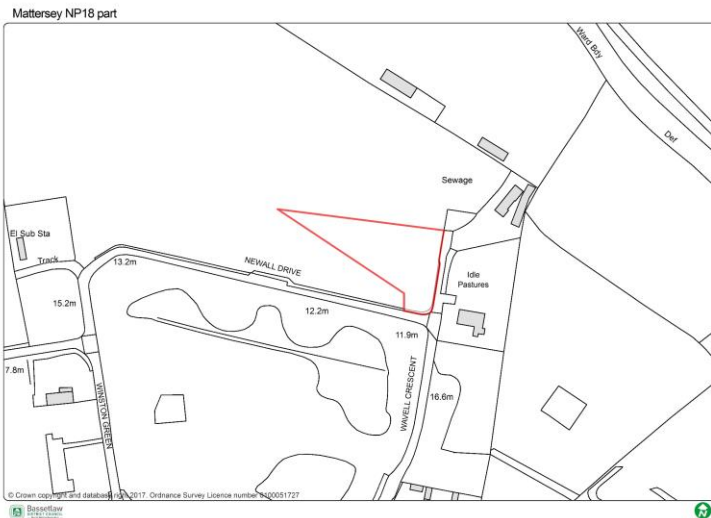
NP17: Land north of Plantation Drive, Mattersey Thorpe



Factors:

- Potential impact on built character
- Potential impact on landscape character
- Lack of community support
- Mixed support from landowners

NP18: Land north of Newall Drive, Mattersey Thorpe (PART)



Factors:

- Part of the site is within the Environment Agency's identified Flood Zone

Assessed sites **not proposed** for allocation

NP19: Land east of Wavell Close, Mattersey Thorpe



Factors:

- Within the Environment Agency's identified Flood Zone
- Mixed community support
- Highway improvement required

NP20: Land east of Everton Road, Mattersey



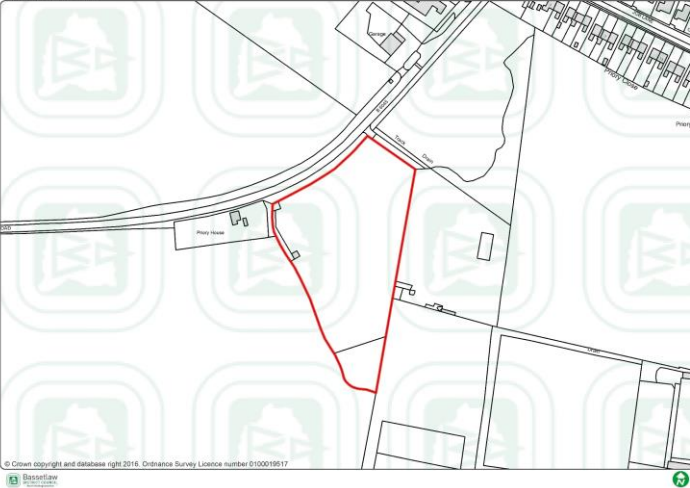
Factors:

- Within the Environment Agency's identified Flood Zone
- Potential impact on built character (listed buildings and conservation area)
- Area of potential archaeological interest
- Mixed community support

Assessed sites **not proposed** for allocation

BDC21: Land east of Main Street, Mattersey

Mattersey BDC21



Factors:

- Potential impact on built character
- Potential impact on landscape character
- Lack of community support

Environment Agency Flood Maps



Enter a postcode or place name:

Mattersey, Nottinghamshire



Other topics for this area...

Flood Warning Areas

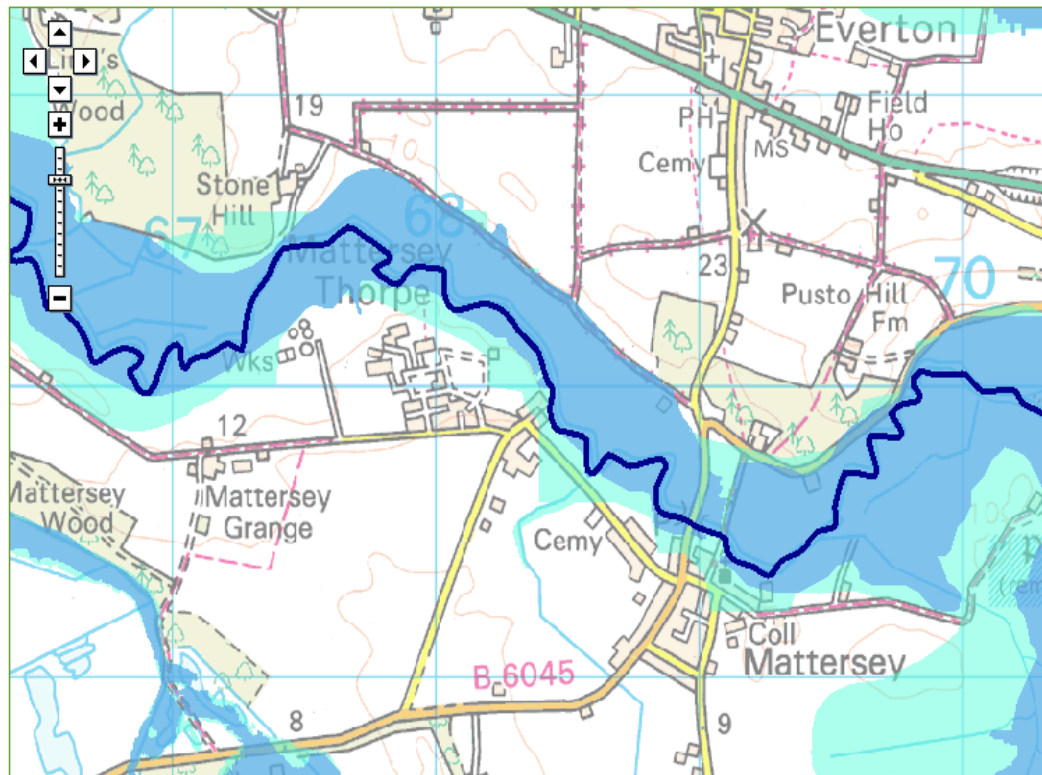
Flood Map for Planning (Rivers and Sea)

Map legend

- Flood Map for Planning (Rivers and Sea) ⓘ
- Flood Zone 3
- Flood Zone 2
- Flood defences (Not all may be shown*)
- Areas benefiting from flood defences (Not all may be shown*)
- Main River ⓘ
- Main River
- Other national environmental organisations ⓘ
- Natural Resources Wales Area of responsibility
- Scottish Environment Protection Agency Area of responsibility

Mattersey, Nottinghamshire at scale 1:20,000

Other maps ⓘ Data search ⓘ Text only version ⓘ



© Environment Agency copyright and database rights 2017. © Ordnance Survey Crown copyright. All rights reserved. Environment Agency, 100024198.

Contains Royal Mail data © Royal Mail copyright and database right 2017.

This service is designed to inform members of the public, in line with our terms and conditions. For business or commercial use, please contact us.

Assessed sites
not proposed for
allocation

Proposed allocations **in Mattersey Thorpe**

Proposed allocations in Mattersey